

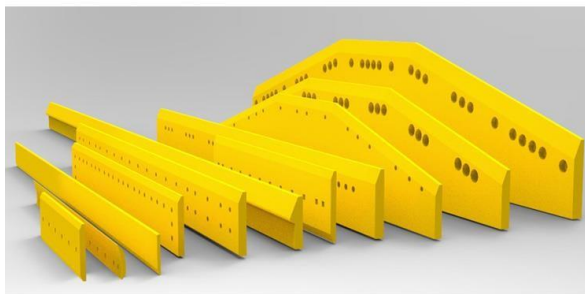


PROFESSIONAL MANUFACTURER
OF BUCKET TEETH FOR 15 YEARS

Ningbo Sanjin Ground Engaging Tools-G.E.T. Parts



Bucket teeth



Cutting edges



Chocky Bars&Wear Buttons



Ripper Shanks



Pins and locks



Bolts and nuts

自动注蜡机 Automatic wax injection machine 4 pcs

掏壳自动流水线 Molding making line 1 pc

覆膜砂射芯机 Sand shell making machine 15pcs

中频炉 Intermediate frequency furnace 5pcs

热处理线 Heat-treating line 3pcs 焙烧炉 Roasting

furnace 2pcs 回火炉 Tempering furnace 2pcs 抛丸机

Shot Blasting Machine 5pcs 喷漆流水线 Painting line

2pcs





Wax Pattern Injection



Pattern Assembly



Shell Making



Shell Making



Shell Making



Dewaxing and Shell



Shell Roasting

Chemical Composition
Inspection & Casting



Gas Cutting



Polishing



Polishing



Heat-treating



Shot Blasting



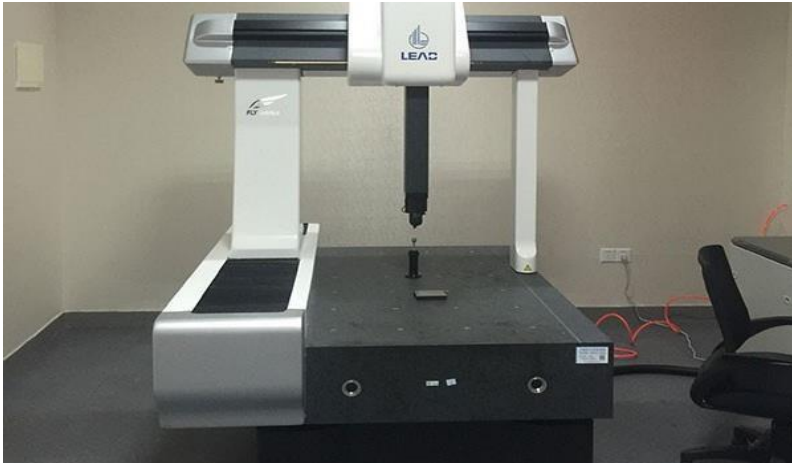
Painting



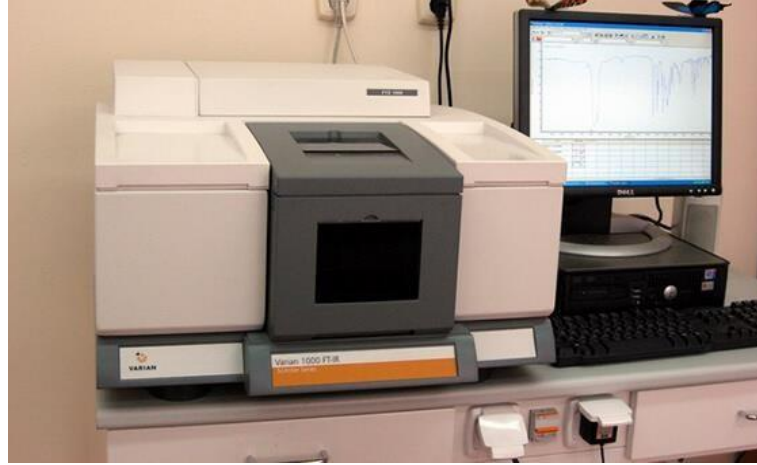
Packing



Delivery



CMM(Three-Direction Coordinate machine)



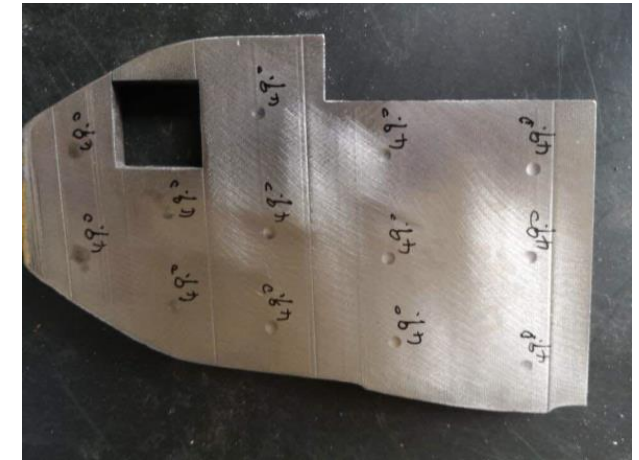
Spectrometer



Tensile Testing Machine



| | |
|--------------------|--|
| Color | Caterpillar Yellow, black, red, green or other as your request |
| Logo | NBSJ, customer logo or no logo |
| Production Method: | Lost wax investment casting |
| Material | Excellent quality alloy steel, specific steel chemical composition to assure products more durable |
| Single Weight | Normal 1kgs to 150 kgs |
| Hardness | HRC46-52 |
| Impact | ≥20J |
| Tensile Strength | ≥1450Rm-N/mm ² |
| | |
| | |
| | |
| | |
| | |



SGS

TEST REPORT

No. : NBIN2010013395ML
Date : Nov 03, 2020
Page: 2 of 3

1. Tensile Test:
Test Method: GB/T 228.1-2010

| Test item | Specimen type | Tensile strength (Rm) (MPa) | Proof strength (Rp0.2) (MPa) | Elongation after fracture(A) Lo=5d0 (%) |
|-----------|----------------|-----------------------------|------------------------------|---|
| Result | Round specimen | 1733 | 1463 | 8.5 |

2. Impact Test:
Test Method: GB/T 229-2007

| Test item | Test condition | Result KV ₂ (J) | | | |
|-----------------|--|----------------------------|------|------|---------|
| | | 1 | 2 | 3 | Average |
| Absorbed energy | Charpy V-notch Dim. of specimens: 55mm×10mm×10mm Temperature: Ambient | 23.0 | 25.5 | 25.5 | 24.5 |

3. Hardness Test:
Test Method: GB/T 230.1-2018

| Test item | Result | | |
|-----------|--------|------|------|
| HRC | 52.1 | 51.9 | 52.2 |

Unless otherwise agreed in writing, this document is issued by the Company subject to its General Conditions of Service printed overleaf, available on request or accessible at <http://www.sgs.com/terms-and-conditions> and, for electronic format documents, subject to Terms and Conditions for Electronic Documents at <http://www.sgs.com/terms-and-conditions>. Attention is drawn to the limitation of liability, indemnification and arbitration clause defined therein. Any notice of this document is advised that information contained herein reflects the Company's findings at the time of its intervention only and within the limits of Client's instructions, if any. The Company's sole responsibility is to its Client and this document does not exonerate parties to a transaction from exercising all their rights and obligations under the transaction documents. This document cannot be reproduced except in full, without prior written approval of the Company. Any unauthorized alteration, forgery or falsification of the content or appearance of this document is unlawful and offenders may be prosecuted to the fullest extent of the law. Unless otherwise stated, the results shown in this test report refer only to the sample(s) tested and such sample(s) are retained for 30 days only.

NBML 0128130

SGS (Shanghai) Inspection & Testing Services Co., Ltd.
1171 Upper South China Road, Hong Kong, China, 915040 T: 86-574-8787006 F: 86-574-8790159 www.sgs.com.cn
中国·宁波·鄞州区新嘉路1171号舜安产业园4号楼11-2.5层 邮编: 315040 T: 86-574-8787006 F: 86-574-8790159 e: sgs.china@sgs.com

Member of the SGS Group (SGS SA)

SGS

测试报告

编号 : NBIN2010013395ML_CN
日期 : 2020-11-03
页码 : 2 of 3

1. 拉伸测试:
测试方法: GB/T 228.1-2010

| 测试项目 | 试样类型 | 抗拉强度 (Rm) (MPa) | 规定屈服 延伸强度 (Rp0.2) (MPa) | 断后伸长率 (A) Lo=5d0 (%) |
|------|--------|-----------------|-------------------------|----------------------|
| 结果 | 圆形截面试样 | 1733 | 1463 | 8.5 |

2. 冲击测试:
测试方法: GB/T 229-2007

| 测试项目 | 测试条件 | 结果 KV ₂ (J) | | | |
|--------|---|------------------------|------|------|------|
| | | 1 | 2 | 3 | 平均值 |
| 冲击吸收能量 | 试样: 夏比 V 型缺口 试样尺寸: 55mm×10mm×10mm 温度: 室温 | 23.0 | 25.5 | 25.5 | 24.5 |

3. 硬度测试:
测试方法: GB/T 230.1-2018

| 测试项目 | 结果 | | |
|------|------|------|------|
| HRC | 52.1 | 51.9 | 52.2 |

Unless otherwise agreed in writing, this document is issued by the Company subject to its General Conditions of Service printed overleaf, available on request or accessible at <http://www.sgs.com/terms-and-conditions> and, for electronic format documents, subject to Terms and Conditions for Electronic Documents at <http://www.sgs.com/terms-and-conditions>. Attention is drawn to the limitation of liability, indemnification and arbitration clause defined therein. Any notice of this document is advised that information contained herein reflects the Company's findings at the time of its intervention only and within the limits of Client's instructions, if any. The Company's sole responsibility is to its Client and this document does not exonerate parties to a transaction from exercising all their rights and obligations under the transaction documents. This document cannot be reproduced except in full, without prior written approval of the Company. Any unauthorized alteration, forgery or falsification of the content or appearance of this document is unlawful and offenders may be prosecuted to the fullest extent of the law. Unless otherwise stated, the results shown in this test report refer only to the sample(s) tested and such sample(s) are retained for 30 days only.

NBML 0128130

SGS (Shanghai) Inspection & Testing Services Co., Ltd.
1171 Upper South China Road, Hong Kong, China, 915040 T: 86-574-8787006 F: 86-574-8790159 www.sgs.com.cn
中国·宁波·鄞州区新嘉路1171号舜安产业园4号楼11-2.5层 邮编: 315040 T: 86-574-8787006 F: 86-574-8790159 e: sgs.china@sgs.com

Member of the SGS Group (SGS SA)







